

# Wolf Creek Trout Lily Preserve

Additional information, photos, history  
and directions are available on our on  
website and Facebook page:

[www.wolfcreektroutlilypreserve.org](http://www.wolfcreektroutlilypreserve.org)

[www.facebook.com/wolfcreektroutlilypreserve/](https://www.facebook.com/wolfcreektroutlilypreserve/)

Each February the estimated bloom time and  
schedule of guided tours will be posted on  
Facebook and the website. Bloom time and  
peak bloom vary from year to year depending  
on weather conditions. To see the best  
display of colorful blooms, check Facebook  
regularly for weather and bloom conditions,  
and plan your visit during the afternoon as  
trout lily flowers open at high sun during the  
midday and close at night.

This brochure was created by the  
courtesy of volunteers.



## Dimpled Trout Lily

The trout lily, *Erythronium umbilicatum*, gets its common name from its speckled leaves that resemble the skin of a trout. Trout lilies are normally found in North Georgia and are very uncommon in the Coastal Plain of South Georgia. The lilies are endangered in Florida. The seeds are dispersed by ants, and normally take four to five years to reach flowering age. Trout lilies have a short growing season. Leaves come up in the winter (January), flower for 2—3 weeks from late January to early March. The plant then goes dormant by spring (mid-April).



## Spotted Trillium



The spotted trillium, *Trillium maculatum* is a flowering plant in the trillium family found in Alabama, Georgia, South Carolina, and Florida. Other common names for *Trillium maculatum* include mottled trillium, spotted wakerobin, and toad shade trillium. They are often found in rich soils in the understories of deciduous forests. Thousands of spotted trillium bloom along with the trout lilies at Wolf Creek.

## Bloodroot

Bloodroot, *Sanguinaria canadensis* is a small perennial, herbaceous flowering plant native to Eastern North America. Also known as bloodwort, redroot, red puccoon and sometimes pauson. Flowers bloom from early March to May, with 8-12 delicate white petals and yellow reproductive parts. They are spotted along the upper slope at Wolf Creek.



## Elliott's Blueberry



Elliott's blueberry, *Vaccinium elliotii*, also known as Mayberry, is a deciduous shrub. Flowers are a pale pink, bell-shaped cluster, opening in early spring (February-March).

Leaves have small teeth on green stems. The edible fruit is a dark blue/black berry at maturity. The plant is said to have various health benefits and medicinal qualities. Elliott's blueberry is seen throughout the slope forest at Wolf Creek.

## Southern Twayblade Orchid

The twayblade orchid, *Listera australis*, is a perennial wildflower with two opposite leaves. Reddish-purple flowers occur along a terminal raceme. This early flowering (Feb-March) orchid occurs in mesic woods or moist low-lying areas. This orchid is small and inconspicuous and is often missed. Several are seen on the upper slopes at Wolf Creek.



## Jack-in-the-Pulpit



Is an herbaceous plant which has three-part leaves on a long stalk, growing from a corm. Also called Indian turnip, the plant is pollinated by fungus gnats, which it attracts by smell and are trapped by the flower. The fruit is a cluster of bright red berries that appear in the fall. At Wolf Creek these plants begin blooming from late Feb.-early March, just as the trout lilies are waning. Jack's can be found all along the slope forest.

A jewel of biodiversity tucked away in  
Grady County, Georgia.



# Wolf Creek Trout Lily Preserve

*"Wolf Creek is reminiscent of a northern mountain cove carpeted in spring wildflowers." --Tom Patrick, Botanist*  
Georgia Department of Natural Resources Heritage Program

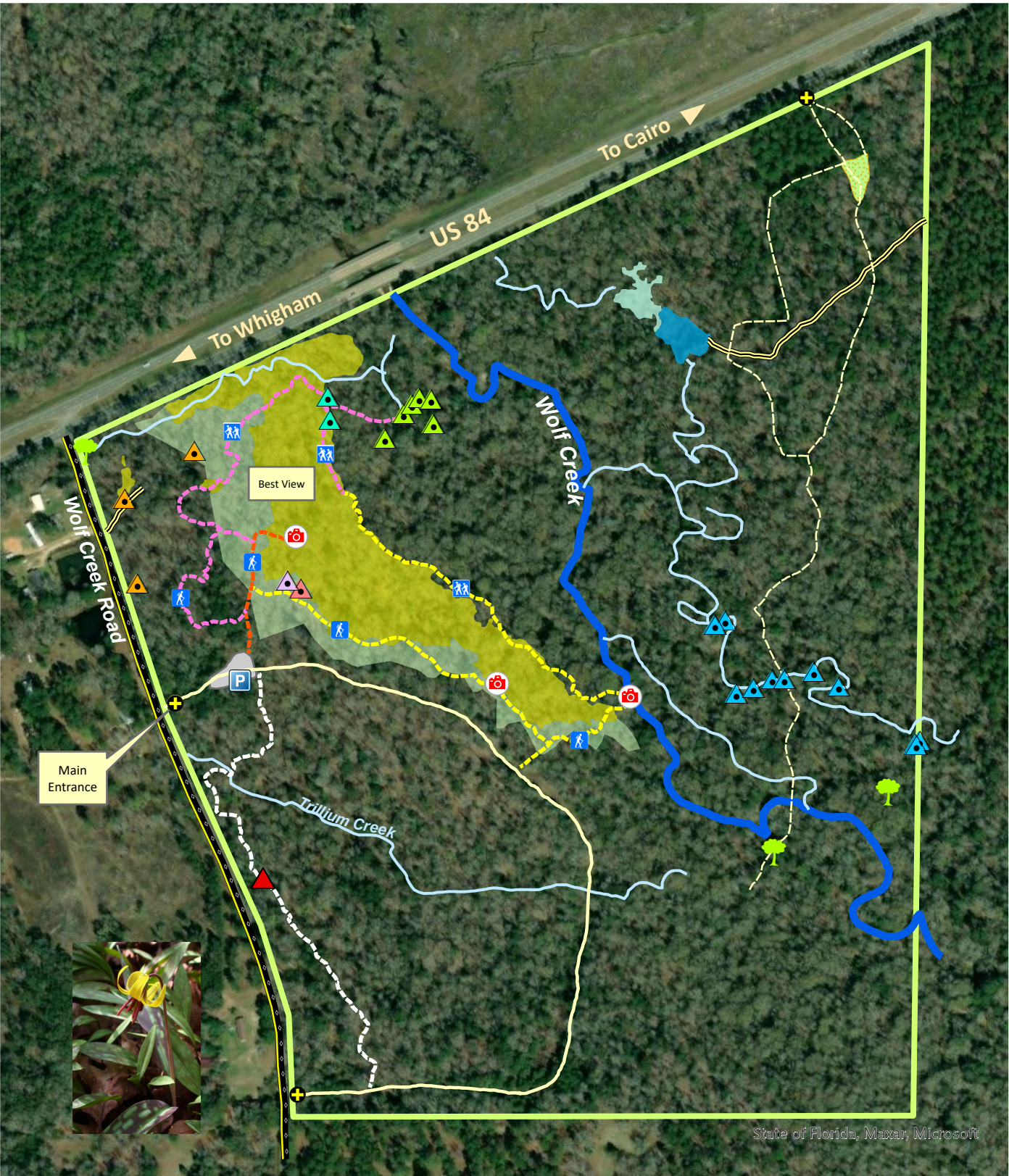
Wolf Creek Trout Lily Preserve is located in and owned by Grady County, GA. The preserve is managed by volunteers and consists of 140 acres of diverse beech-magnolia and floodplain forest. Wolf Creek is a tributary of Tired Creek, which flows into the Ochlockonee River.

The highlight of Wolf Creek Trout Lily Preserve are the millions of Dimpled Trout Lilies which form a solid carpet of approximately 15 acres. Wolf Creek Trout Lily Preserve has the largest known population of trout lilies in North America. At its peak, the colorful yellow floral display is magnificent.

Other special interest wildflowers at Wolf Creek Trout Lily Preserve include: Spotted Trillium, Green Fly Orchid, Crane Fly Orchid, Southern Tway Blade Orchid, Coral Root Orchid, Blue Gentians, Florida Bellwort, Bloodroot, Atamasco Lily, and Spider Lily.

Wolf Creek Trout Lily Preserve is located off of US Hwy 84 approximately 5 miles west of Cairo and 2 miles east of Whigham, GA. The main entrance is on the east side of Wolf Creek Road.

The property was purchased in 2009 through generous private donations combined with a grant from the Georgia Land Conservation Program.



Legend	
	Coral Root Orchid
	Gentian
	Green Fly Orchid
	Needle Palm
	Tipularia
	Tway Blade Orchid
	Strawberry Bush
	Noteworthy Large Tree
	Gates
	Trail Orange (400 feet)
	Trail Yellow (1/2 mile)
	Trail Pink (4/10 mile)
	White Trail (1/3 mile)
	Primary Woods Road
	Secondary Woods Road
	Wolf Creek Road
	Man-made Ditch
	Seasonal Streams
	Wolf Creek
	Pond
	Wetland
	Trout Lily Main Population
	Trout Lily Peripheral Population
	Grassy Open Area
	Parking Area
	Property Boundary

